



Acclaimed artist and instructor  
Robert Maniscalco painting workshops

## Power of Positive Portrait Painting 2-day Workshop \$175.00 for both days, includes model fee

- **Portrait Painting Workshop** with Robert Maniscalco
- Sponsored by the **Village Arts Factory, Partnership for the Arts and Humanity, Livonia Arts Commission** and **Three Cities Art Club**
- Friday/Saturday, **October 7 & 8, 2022** 10am - 4:30pm
- The workshop will take place at the **Village Arts Factory**, 50755 Cherry Hill, Canton, MI 48188 (just west of Ridge Road)

### Description:

In these sessions we will explore value-based “light on form” painting methods to create expressive, accurate portraits from a live model. Robert will also present a few salient drawing and painting exercises in the morning sessions. The focus will be on gaining a deeper understanding of observable values to achieve form, character and likeness. Robert will get each participant to think like a painter, presenting a short demo, paint-along style. Honest observation and abstraction of forms will be the key. Concrete, practical application, rather than meaningless theory, will be the order of the day. The instruction will be tailored to allow for a deepening of the individual’s unique approach and response to the subject at hand. Expect lots of individual attention and nothing less than a major epiphany regarding how the subtle manipulation of light on form actually works in depicting realistic subjects that seem to jump out of the canvas. Questions, please call Robert at (313) 689-2993. **Materials List** follows.

**Space is limited. Reserve your spot now. [BOOK YOUR SPACE](#)**

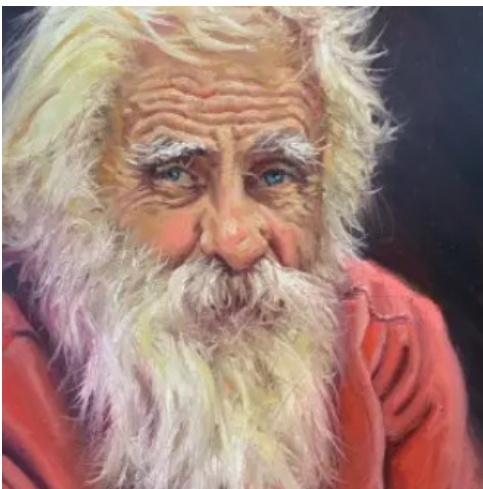
#### CAUTION - ROAD CONSTRUCTION

Currently, Cherry Hill is closed for road construction just west of Ridge Road. Therefore, please take Ford Road to Napier, head south to Cherry Hill, turn left and in less than 1/4 mile, the Village Arts Factory will be on your right. When facing the building, use the door on the left which is where the workshop will be held.

**QUESTIONS: Please call Marilyn Meredith at 313-231-3939**



Artwork by Robert Maniscalco



You may also want to pick up a copy of Robert’s Amazon #1 Bestseller, ***The Power of Positive Painting.***

*This is not required for a successful workshop experience but has many helpful how-to lessons.*

[www.maniscalcogallery.com](http://www.maniscalcogallery.com)



# MATERIALS LIST

## Suggested Brushes:

**Various soft Filberts** – sizes 2, 6, 14 [Winsor & Newton Monarch Mongoose Brushes, Filbert, Long Handle, Size 8 \(10 mm x 19 mm\)](#) offers better durability than mongoose. This unique synthetic fiber is so much like mongoose, it even has the tapered point and surface texture of the natural hair. It is stiffer than sable, but softer than hog bristle, perfect for acrylic and oil painting. Each brush is elegantly crafted with a gold-tone ferrule and a dark brown stained and lacquered handle. Use a filbert for painting fine lines and broad strokes with softer edges. Sable Flats (for harder edged statements) – sizes 4, 8, 16

**Sable rounds** (for softer edged statements) – sizes 4, 8, 16

[Winsor & Newton Winton Hog Bristle Brushes, Filbert, Long Handle, Size 10 \(25/32" x 1-1/4"\)](#)

(Skumble) Brushes (used mostly in under painting, these can be old, nasty holdouts!) – (be careful not to over use this technique)

## Canvas:

16" x 20" (Ultrasmooth Portrait Duck) and 2-3 – 11 x 14's . For professional portraits I suggest using a primed linen, such as [Fredrix Linen Canvas Rolls, Oil Single Primed, 54" x 6 yd](#) which can be cut and stretched to size. For stretched canvas try [Blick Studio 1-1/2" Profile Linen Canvas, Acrylic Primed, 14" x 18"](#) or [Fredrix Green Label 3/4" Profile Linen Canvas, Acrylic Primed, 16" x 20"](#). There are many other surfaces that can be used, i.e. Masonite (not tempered) or plywood (easy to prime with gesso); the lumber yard will cut these to your specifications. In class, I suggest canvas paper pads (if you like it, you can stretch it) or canvas boards as an alternative to stretched canvases. Suggest: FREDRIX Kent Primed Linen Canvas #125SP

## Paints:

*Note about the quality of paints:*

Different brands may have slightly different names. I recommend the best brands you can afford because:

1. fillers really do effect the quality of paint mixes, 2. using the colors below to make the "power palette" require particular, quality pigments, and 3. in terms of quantity and quality, you really do get what you pay for!

*Recommended paint brands, in order of preference:*

### **Winsor & Newton**

Pre-tested (Grumbucher)

Gamblin

Winton

### **Colors:**

[Titanium White 644 200 ml](#) \*

[Ivory Black 331 200 ml](#) (used to mix neutrals)

[Permanent Alizarin Crimson 468 37 ml](#) \*

[Burnt Umber 76 37 ml](#) \*

[Raw Umber light 557 37 ml](#)

[Prussian Blue 538 37 ml](#) (very potent, so be careful. You may substitute Ultramarine or Winsor Blue)\*

[Yellow Ochre 744 37 ml](#) \*

Raw Sienna or Indian Yellow

Burnt Sienna

Thalo Green

Venetian , Indian or Mars Red

[Cadmium Red 94 37 ml](#) \* (or Vermillion)

Cadmium Yellow Deep

[Cadmium Yellow Pale 118 37 ml](#) \*

\* absolutely necessary, these are basic colors we use in classes and workshops

**Medium:**

For Oils: 1/2 Linseed oil, 1/2 Turpenoid, mixed in a jar. (Please do not buy pre-mixed mediums)  
(optional: mix Damar Retouch Varnish with above – in three equal parts,)

**Miscellaneous Materials:**

- **Sketchbook:** (newsprint,16×20), also, recommend a bound sketchbook to keep as a visual/narrative journal
- **Charcoal:** pencil/compressed stick/vine
- **Easel – table or floor**
- **Value Scale** [Plastic coated Value Scale from 0 to 10](#) (available only from RM)
- **Palette** (paper palette pad), **a piece of clear glass** to be used to mix paint (Large enough to lay over your **Power Palette:** about 11" x 17")
- **Retardant:** For Oils: Oil of Cloves – drop or two in each mixture in your Power Palette will keep it usable for weeks (can get at most health food stores)
- **Palette Box made by "Masterson"** to seal your Power Palette and freeze for future use
- **Rags** (cotton or SOFT paper towels)
- **Palette knife:** for mixing paint
- **Brush Cleaner:** **Turpenoid** for cleaning oil paint brushes (please do not use Turpentine)
- **Moll Stick** (used to steady hand for better control, when necessary)
- **Drop Cloth:** to protect floor
- **Small Table:** for palette

**Optional Materials:**

- **Power Palette Guide** (available for purchase only from RM)
- **Mattboard corner samples** for visualizing compositions
- **Color wheel** available at most art stores
- **Gesso** to prime boards before class/workshop