

THREE CITIES ART CLUB



February 2018 Newsletter

www.threecitiesartclub.org

Monday, February 5th, 7 - 9 pm

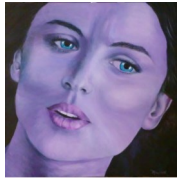
Canton Township Hall

1150 S. Canton Center Rd., Canton 48188

Lower Level - Meeting Room A



SNACKS FOR
February
Doreen Lawton



February Show & Tell

Please **bring one of your favorite works of art** and share with us the background of the piece such as...

How you chose subject; special technique; medium(s), done on what (type of paper, canvas, etc.); tips you can offer the group.

This is meant to be a fun process - no pressure, it is on a **voluntary** basis. You can talk off the cuff or, if you prefer, we can ask you questions that you can respond to.

You don't have to be a member to participate but will need to be a paid member to submit your art in our monthly popular vote competition (if it hasn't been entered before). We will get to know each other better and hopefully learn something new.

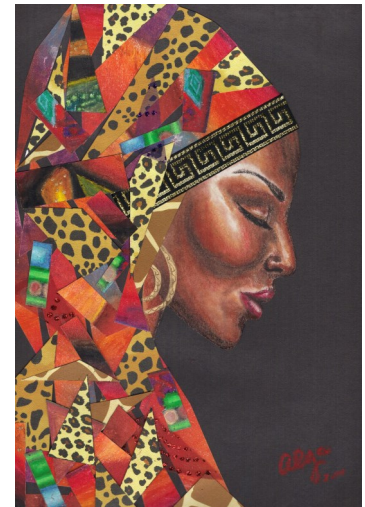
January 2018 Popular Vote Winners

1st PLACE

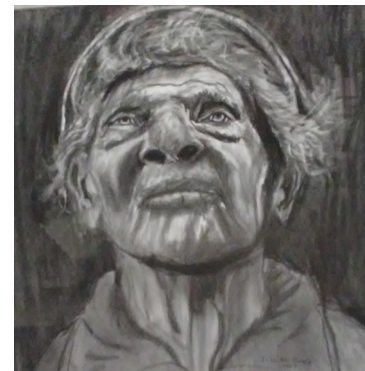
Larry
Weldon



2nd PLACE Alga Washington



3rd PLACE John Mullinax



Mark Your Calendars:

Feb. 1-28, 2018

Westland

Black History Month Art Exhibition

Black artists will be featured in this month-long exhibition at Gallery at City Hall - open City Hall hours - Free; **Reception Friday, Feb. 2, 2018 4:30 - 7:30 - art, food & music - Free**; 36300 Warren Road, Westland, MI 48185

March 5, 2018

Canton

Artwork Critique

Three Cities members can bring art to be critiqued by Kim Ensich; Free; 7-9 Canton Township Hall



Call for Artists Three Cities Art Club Exhibition at Westland Public Library April 6, 7 & 8, 2018

Enclosed with this newsletter is an entry form for members who wish to participate in this 3-day event. Small entry fee, 10% commission, work at least one shift and bring a snack for our refreshment table. Properly wired hanging art and bin/table pieces are acceptable. Please submit early!!

Send information on upcoming art shows to enter & events to attend to: marilynmeredith@wowway.com